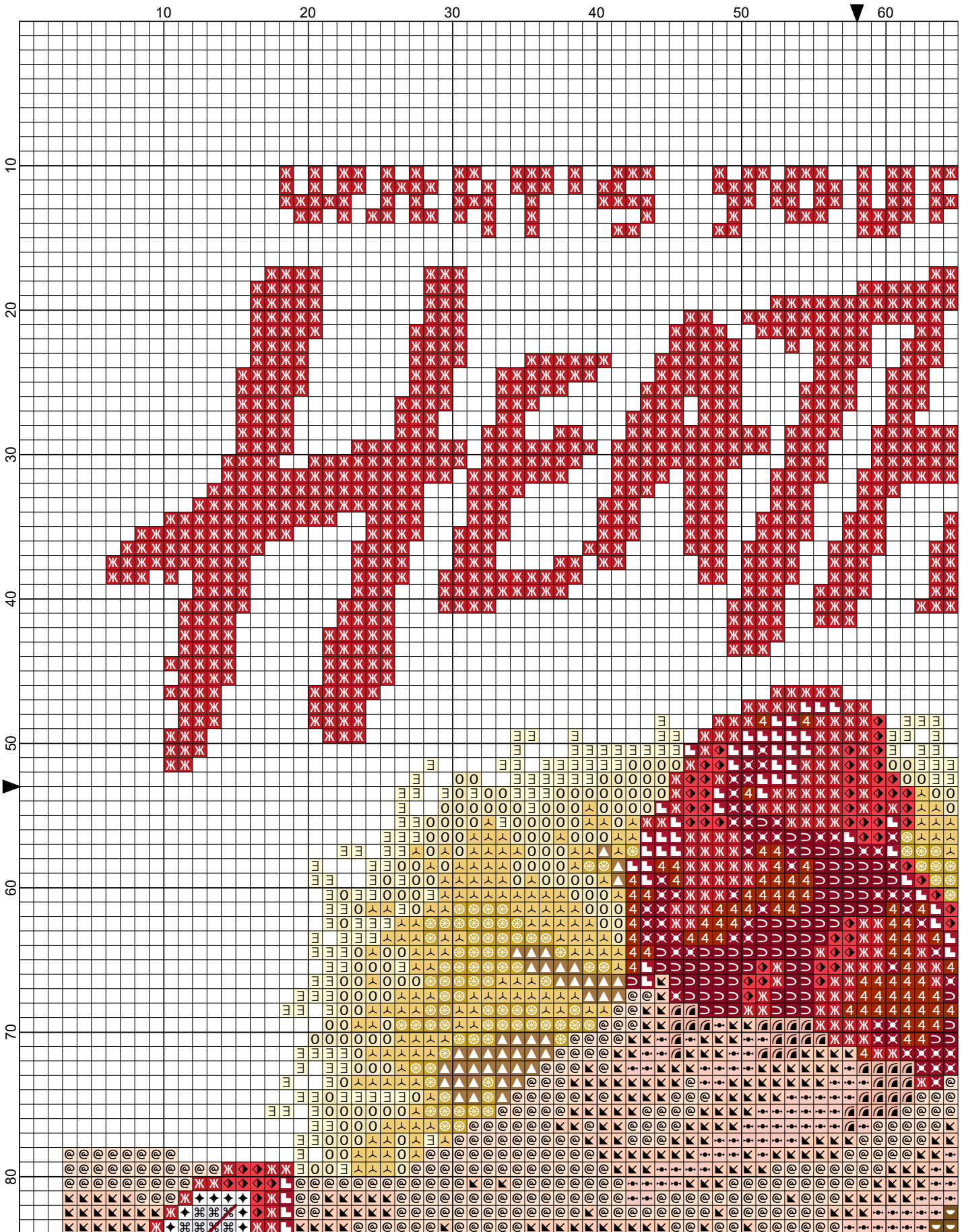
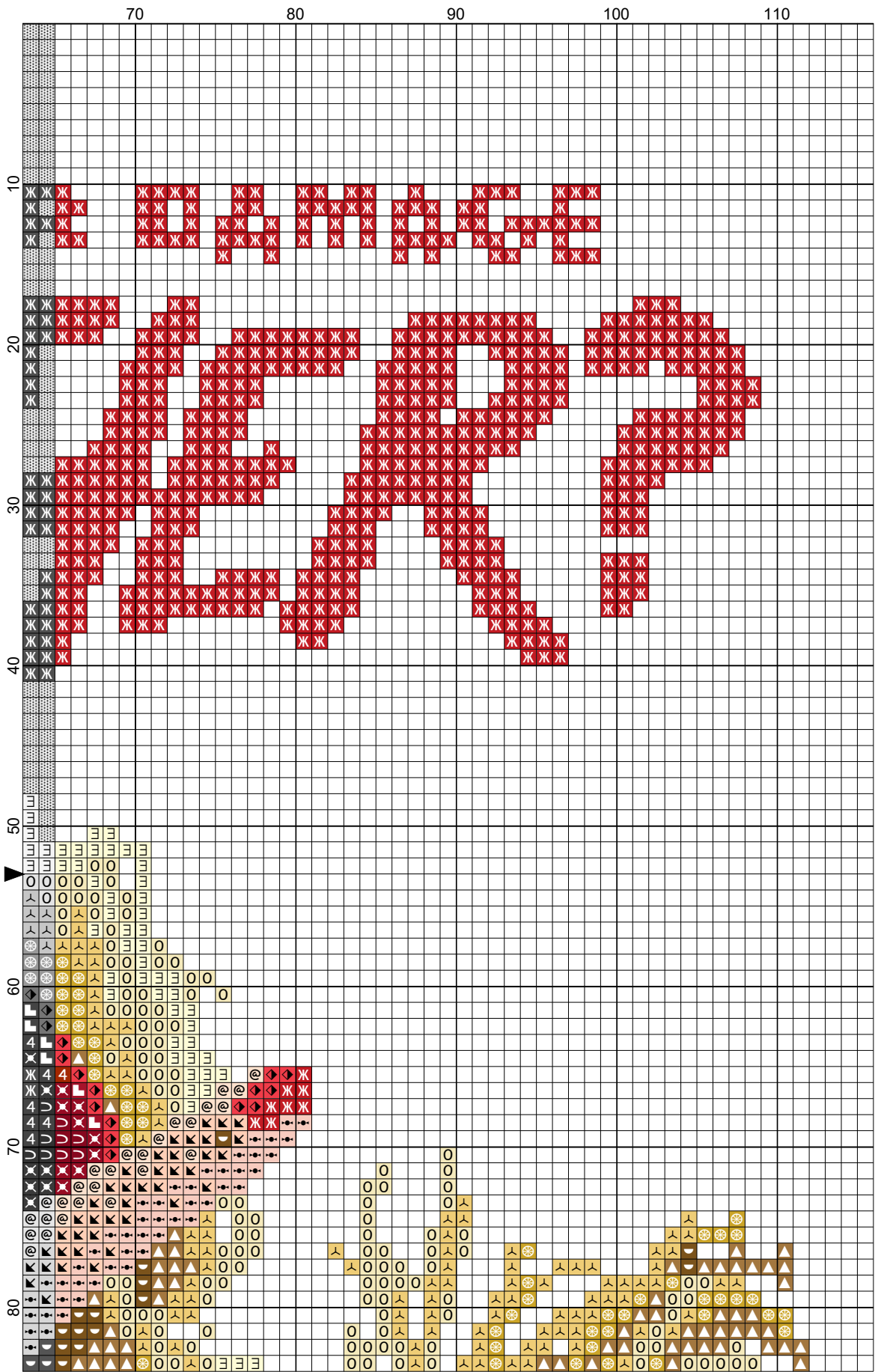


# What's Your Damage?

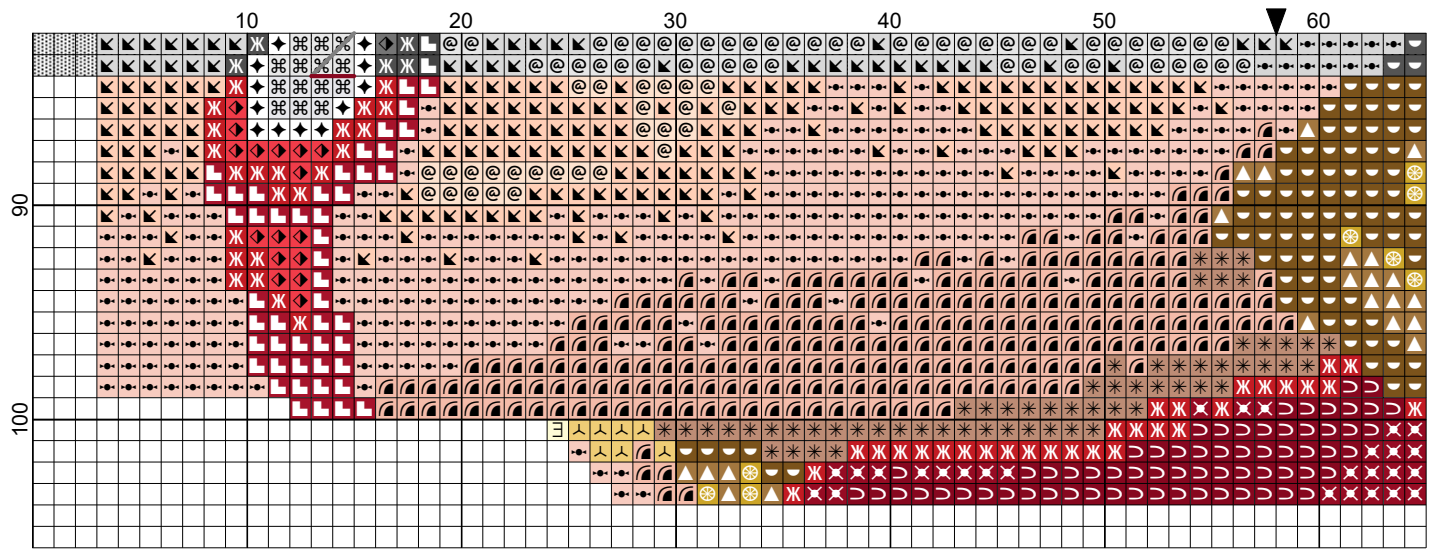


# What's Your Damage?

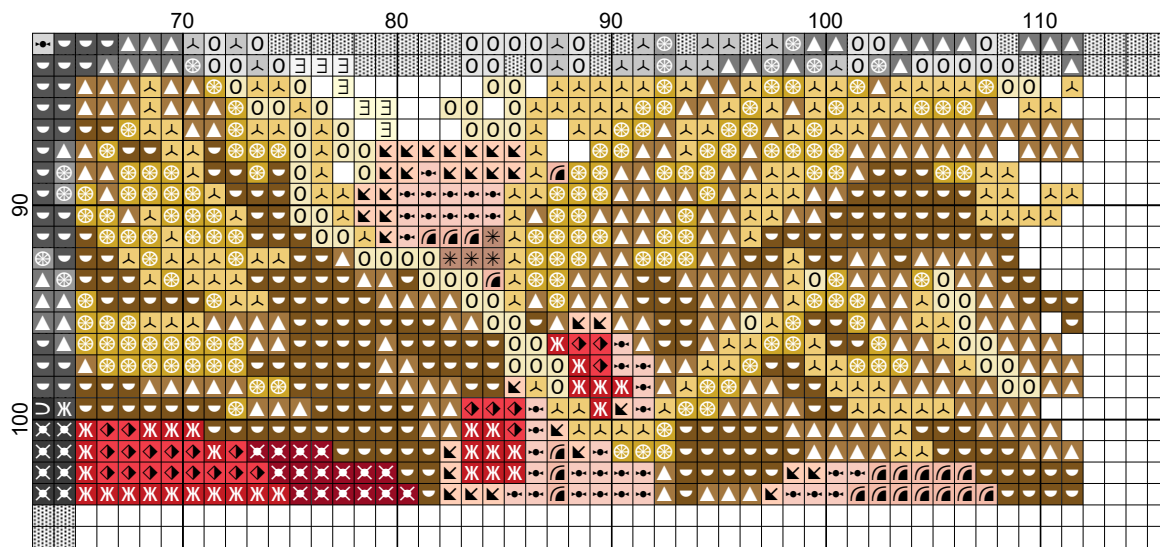


- Legend:
- DMC-433
  - DMC-498
  - DMC-435
  - DMC-815
  - DMC-816
  - DMC-817
  - DMC-677
  - DMC-918
  - DMC-White
  - DMC-762
  - DMC-948
  - DMC-945
  - DMC-754
  - DMC-3771
  - DMC-3773
  - DMC-3801
  - DMC-3823
  - DMC-676
  - DMC-680
- Backstitches:
- DMC-815

# What's Your Damage?



# What's Your Damage?


















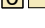



# What's Your Damage?


---

**Author:** Ingleside Imaginarium  
**Grid Size:** 116W x 106H  
**Design Area:** 7.79" x 6.71" (109 x 94 stitches)

## Legend:

 [2] DMC 433 brown - md	 [2] DMC 918 red copper - dk	 [2] DMC 3773 desert sand - md
 [2] DMC 498 christmas red - dk	 [2] DMC White white	 [2] DMC 3801 christmas red - lt
 [2] DMC 435 brown - vy lt	 [2] DMC 762 pearl gray - vy lt	 [2] DMC 3823 yellow - ul pl
 [2] DMC 815 garnet - md	 [2] DMC 948 peach - vy lt	 [2] DMC 676 old gold - lt
 [2] DMC 816 garnet	 [2] DMC 945 tawny - md	 [2] DMC 680 old gold - dk
 [2] DMC 817 coral red - vy dk	 [2] DMC 754 peach - lt	
 [2] DMC 677 old gold - vy lt	 [2] DMC 3771 terra cotta - ul vy lt	

## Backstitch Lines:

 DMC-815 garnet - md